



Be Part of the Green Transition

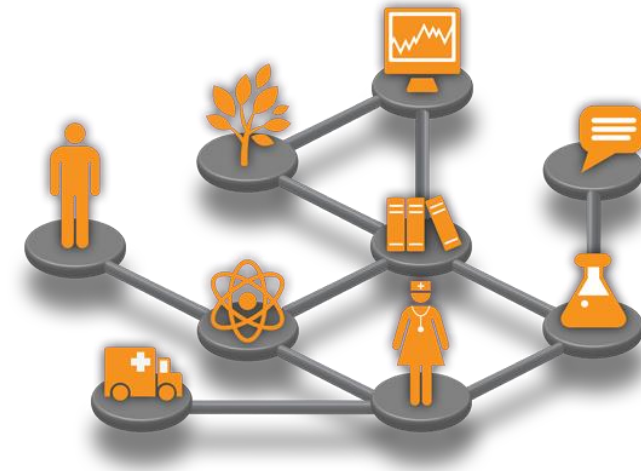
The N4C Platform

Functionality and assessment of NBS projects



N4C Platform: Functionality

The N4C Platform offers an **integration framework** where several elements (existing and new tools/services) are deployed and interconnected, all supported by **additional horizontal functionalities** to complete the NBS assessment process



The main objective of the N4C platform is to **help in the decision making process** when an intervention related to NBS execution is planned



N4C Platform: Functionality



PARTICIPATION

FORUM

LOG IN

SIGN UP



Engagement of users on NBS interventions



Assessment of NBS projects and scenarios

Access to NBS knowledge

Geocluster4NBS tool

NBS Information

General information about one or more Nature Based Solutions. The NBS can be filtered through certain searching criteria.

More >

NBS Project Observatory

Observatory of information about NBS pioneer projects already implemented in a georeferenced way.

More >

Replicability Checking

Replicability checker to analyse where an NBS solution can be replicated with two different approaches: market push or land owner's pull

More >

NBS and Climate

Questionnaire in order to find the best methods and tools to evaluate and solve the climate change problems in a city.

More >





N4C Platform: Assessment STEPS



STEP 0: NEW PROJECT CREATION

×

Create Project

Project Name

Project Name

Project Location (City)

Project Location (City)

Location (Latitude)

Location (Latitude)

Location (Longitude)

Location (Longitude)

Project Description

Short Description

Project Objectives

Select... | ▾

Project Constraints

Select... | ▾

Scale

Select... | ▾

CREATE PROJECT






N4C Platform: Assessment STEPS



STEP 1: PROJECT DETAILS AND STAKEHOLDERS' INVOLVEMENT



+

ADD PROJECT

TEST PROJECT

ARGEDOR TEST

BOECILLO_TEST

N4C_TEST1

PARTICIPATIONFORUMPROFILELOGOUT

1234567891011

PROJECT DETAIL

Project Name

Boecillo_test

Project Location (City)

Boecillo

Location (Latitude)

41.5389094

Location (Longitude)

-4.7266046

Project Description

Small village located in the south of Valladolid, in Spain

Project Objectives

Urban water management and quality x
Air quality at district/city scale x
Climate mitigation x

Project Constraints

Limited investment x

Scale

Entity

UPDATE

Involved People

Name

Surname

Email

INVITE

Name

Email

Critinalaguna

crlag@cartif.es

DELETE

NEXT

This project has received funding from the European Union's Horizon 2020 research and innovation programme under grant agreement No 730468





N4C Platform: Assessment STEPS



STEP 2: DATA INSERTION

+

ADD PROJECT

TEST PROJECT

ARGEDOR TEST

BOECILLO_TEST

N4C_TEST1

PARTICIPATION

FORUM

PROFILE

LOGOUT

1

2

3

4

5

6

7

8

9

10

11

DATA INSERTION

EXTERNAL SERVICE

MANUAL INFORMATION

DRONES SERVICE

TERRAMAP SERVICE

A priori information (other GIS maps)

UPLOAD

Compactness-Surface - shp

UPLOAD

Select File

Select File

File Name		
P3-DI-F30_2007_felszinboritas_szechenyi.shp	DOWNLOAD	DELETE
P3-DI-F35_ET5_DR01_Fly_sites_SZEG.zip	DOWNLOAD	DELETE

BACK

NEXT





N4C Platform: Assessment STEPS



STEP 3: AREA OF INTERVENTION DRAWING

+

ADD PROJECT

TEST PROJECT

ARGEDOR TEST

BOECILLO_TEST

N4C_TEST1

PARTICIPATIONFORUMPROFILELOGOUT

1234567891011

AREA OF INTERVENTION DRAWING

The map displays the town of Boecillo with its street network. Several areas are highlighted in green, indicating the designated zones for intervention. Major roads are labeled, including N-601 and CL-600. The map is sourced from Mapbox and OpenStreetMap.

BACK

NEXT


This project has received funding from the European Union's Horizon 2020 research and innovation programme under grant agreement No 730468





N4C Platform: Assessment STEPS

STEP 4: SCENARIO GENERATION



+

ADD PROJECT

TEST PROJECT

ARGEDOR TEST

BOECILLO_TEST

N4C_TEST1

1

2

3

4

5

6

7

8

9

10

11

SCENARIO GENERATION

SCENARIO DEFINITION

Explanation line

NBS Pre-selected

☐ NBS-1

☐ NBS-2

☐ NBS-3

☒ NBS-4

Constrains

☐ Constrains1-NBS-1

☐ Constrains1-NBS-2

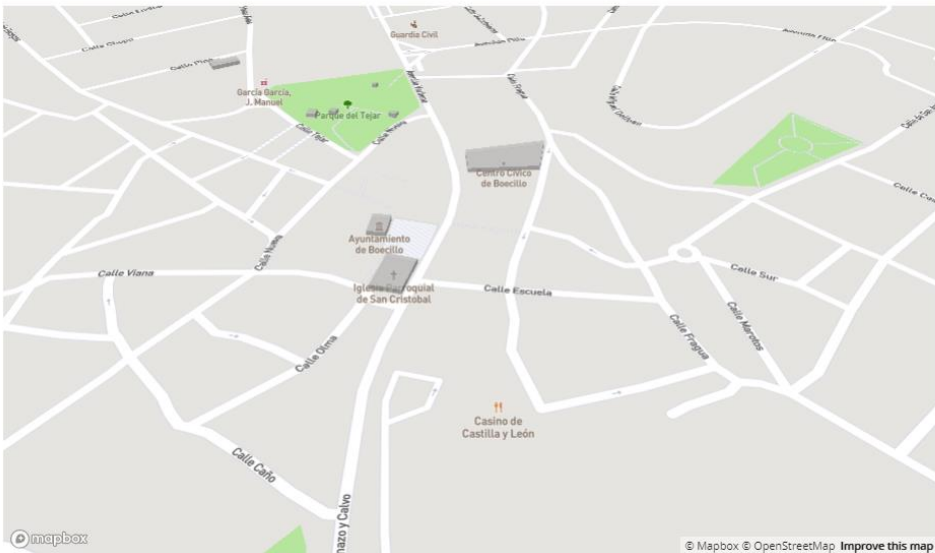
☐ Constrains1-NBS-3

Functional Unit

Indicate Quantity

m²

ADD NBS



mapbox

© Mapbox © OpenStreetMap Improve this map

CREATE SCENARIO

BACK

NEXT

Scenario: Proposal of NBS intervention where USCs are desired to be solved

1 Scenario:

- Id of the project
- NBS
- Functional units (surface to be covered by the NBS in m2, or number of elements)
- Possible NBS constrains affecting their applicability






N4C Platform: Assessment STEPS



STEP 5: SUMMARY OF THE SCENARIOS GENERATED



⊕ ADD PROJECT

TEST PROJECT

ARGEDOR TEST

BOECILLO_TEST

N4C_TEST1

PARTICIPATIONFORUMPROFILELOGOUT

1

2

3

4

5

6

7

8

9

10

11

SUMMARY of THE SCENARIO GENERATED

SCENARIO 19

NBS	Functional Unit	Constrains
Urban forest	2000 m2	no nbs-constrains

SCENARIO 20

NBS	Functional Unit	Constrains
Intensive green roof	100 m2	no nbs-constrains

SCENARIO 21

NBS	Functional Unit	Constrains
Semi-intensive green roof	100 m2	no nbs-constrains





N4C Platform: Assessment STEPS



STEP 6: URBAN ASSESSMENTS

+

ADD PROJECT

TEST PROJECT

ARGEDOR TEST

BOECILLO_TEST

N4C_TEST1

PARTICIPATIONFORUMPROFILELOGOUT

1

2

3

4

5

6

7

8

9

10

11

URBAN ASSESSMENTS

GREENPASS

COLOUREE

EXPERT MODEL-BASED BOX

Time Frame: 10 Year

	Title	NBS	Functional Unit	Constrains
<input type="checkbox"/>	Scenario 4	NBS_2+IM	950 m, 1000 unites	Constrain2_NBS_3
<input type="checkbox"/>	Scenario 5	NBS_1+IM	950 m, 500 unites	Constrain2_NBS_2
<input type="checkbox"/>	Scenario 6	NBS_3+IM	90 m, 60 unites	Constrain1_NBS_2

BACKNEXT





N4C Platform: Assessment STEPS



STEP 7: SOCIO-ECONOMIC ASSESSMENTS

NATURE
4 CITIES

+

 ADD PROJECT

TEST PROJECT

ARGEDOR TEST

BOECILLO_TEST

N4C_TEST1

PARTICIPATION FORUM PROFILE LOGOUT



SOCIO ECONOMIC ASSESSMENTS

←

Nature base solution:

Urban forest

Tree Species

Select...

Soil Conditions

Clay:

Select...

☐ Paverment

This project has received funding from the European Union's Horizon 2020 research and innovation programme under grant agreement No 730468





N4C Platform: Assessment STEPS



STEP 8: ENVIRONMENTAL ASSESSMENTS

NATURE
4 CITIES

+

 ADD PROJECT

TEST PROJECT

ARGEDOR TEST

BOECILLO_TEST

N4C_TEST1

PARTICIPATION FORUM PROFILE LOGOUT



ENVIRONMENTAL ASSESSMENTS

SIMPLIFIED LCA TOOL

EPESUS

Time Frame: 10 Years

Title	NBS	Functional Unit	Constrains
<input type="radio"/> Scenario - 19	Urban forest	2000 m2	no nbs-constrains
<input checked="" type="radio"/> Scenario - 26	Planter green wall	100 m2	no nbs-constrains

General Information

Green wall surface (m2)

850

Green wall lifetime (years)

40

Fabrication stage

Mounting system

Aluminium alloy weight (kg)

1600

This project has received funding from the European Union's Horizon 2020 research and innovation programme under grant agreement No 730468





N4C Platform: Assessment STEPS



STEP 9: ASSESSMENT RESULTS

+

ADD PROJECT

TEST PROJECT

ARGEDOR TEST

BOECILLO_TEST

N4C_TEST1

[PARTICIPATION](#) [FORUM](#) [PROFILE](#) [LOGOUT](#)



ASSESSMENT RESULT

Scenario - 26

URBAN ASSESSMENTS RESULT

SOCIO ECONOMIC ASSESSMENTS RESULT

ENVIRONMENTAL ASSESSMENTS RESULT

SIMPLIFIED LCA TOOL

End of life of raw materials

Indicator	Value
Acidification	0.0009941421539236678
Climate change	0.4495345728881433
Freshwater ecotoxicity	5.553470348945608
Freshwater eutrophication	0.0000024636718325876872
Human toxicity, cancer effects	5.6350653548293226e-8
Human toxicity, non-cancer effects	0.000003428131352424203
Mineral, fossil & ren resource depletion	0.0000015004772612096367
Ozone depletion	2.7067149541880164e-8
Photochemical ozone formation	0.0005706574692649636

Fertilisers use (emissions in the environment)


Indicator	Value
Acidification	0.0023832977142857134
Climate change	0.040732593277310776
Freshwater ecotoxicity	0
Freshwater eutrophication	0.000050637613918806955
Human toxicity, cancer effects	0
Human toxicity, non-cancer effects	0
Mineral, fossil & ren resource depletion	0
Ozone depletion	0
Photochemical ozone formation	0





N4C Platform: Assessment STEPS

STEP 10: IM PRE-SELECTION



+

ADD PROJECT

TEST PROJECT

ARGEDOR TEST


BOECILLO_TEST

N4C_TEST1


PARTICIPATIONFORUMPROFILELOGOUT

1234567891011


IM PRE-SELECTED



IMPLEMENTATION MODEL PRE-SELECTION TOOL



Please, define the following parameters for your NBS project, one by one and following the order.
(To re-start, please delete all the filters, Clicking on Delete filters button while CTRL button is pressed)

DELETE FILTERS

WHAT?

NBS

Tümü

Ownership

Tümü

Implementation scale

Tümü

WHO?

Initiating actor

Tümü

HOW?

GOVERNANCE

Government support

Tümü

Desired participation

Tümü

BUSINESS

Economic context

Tümü

Environmental awareness

Tümü

This project has received funding from the European Union's Horizon 2020 research and innovation programme under grant agreement No 730468



N4C Platform: Assessment STEPS



STEP 11: EXPORTATION



⊕ ADD PROJECT

TEST PROJECT

ARGEDOR TEST

BOECILLO_TEST

N4C_TEST1

PARTICIPATION

FORUM

PROFILE

LOGOUT



EXPORT

The result of Urban assessment

EXPORT

The result of Environmental assessment

EXPORT

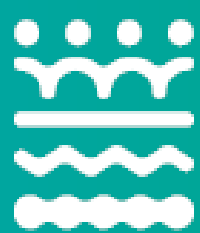
The result of Socio-economic assessment

EXPORT

BACK



● ● ● ● Thank you for your attention!



NATURE
4 CITIES

Visit our website: <http://www.nature4cities.eu/>



And follow us on the social media:



#Nature4Cities